






52-15 FLUSHING AVENUE

GEOGRAPHIC CENTER OF NEW YORK CITY

NEW PRICE! 70,000 SF AVAILABLE!



- TOTAL SIZE:** 65,000 SF PLUS 5,000 SF PARKING
- 60,000 SF GROUND-FLOOR WAREHOUSE
 - 5,000 SF MODERN OFFICES
- BLOCKS / LOTS:** 2611 / 328, 350
2633 / 8
- ZONE:** M3-1
- CEILING HEIGHT:** 22' CLEAR
- LOADING:** 4 INTERIOR TAILBOARDS
1 DRIVE-IN
- FEATURES:**
- 69,970 SF PLOT
 - 139,940 SF BUILDABLE
 - OFFICES FULLY OVERLOOK WAREHOUSE
- ACCESS:** CLOSE PROXIMITY TO LONG ISLAND EXPRESSWAY AND BROOKLYN QUEENS EXPRESSWAY
BLOCKS FROM  SUBWAY
    BUSES



FOR ADDITIONAL INFORMATION
CONTACT EXCLUSIVE AGENT:

718-786-5050

BEN FEIG
bfeig@greiner-maltz.com
718-786-5050 x229
Broker Cooperation Encouraged

Any information set-forth herein has been obtained from sources deemed reliable, however, we have not verified it, and make no representation or warranty of any kind, including without limitation: condition: either latent or patent, size or manner of construction of the property, compliance with local law, and environmental conditions. All information submitted herein is subject to errors and omissions, and the right of our principal(s), to withdraw, modify, or condition the listing without prior notice.

INDUSTRIAL, COMMERCIAL and RETAIL REAL ESTATE Since 1953

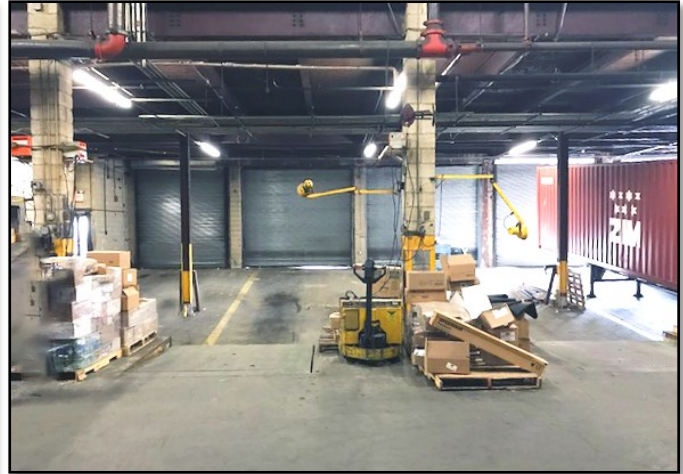
GREINER-MALTZ
REAL ESTATE
www.greiner-maltz.com



52-15 FLUSHING AVENUE

GEOGRAPHIC CENTER OF NEW YORK CITY

NEW PRICE! 70,000 SF AVAILABLE!



FOR ADDITIONAL INFORMATION
CONTACT EXCLUSIVE AGENT:

718-786-5050

BEN FEIG

bfeig@greiner-maltz.com

718-786-5050 x229

Broker Cooperation Encouraged

Any information set-forth herein has been obtained from sources deemed reliable, however, we have not verified it, and make no representation or warranty of any kind, including without limitation: condition: either latent or patent, size or manner of construction of the property, compliance with local law, and environmental conditions. All information submitted herein is subject to errors and omissions, and the right of our principal(s), to withdraw, modify, or condition the listing without prior notice.

INDUSTRIAL, COMMERCIAL and RETAIL REAL ESTATE Since 1953

GREINER-MALTZ
REAL ESTATE
www.greiner-maltz.com

